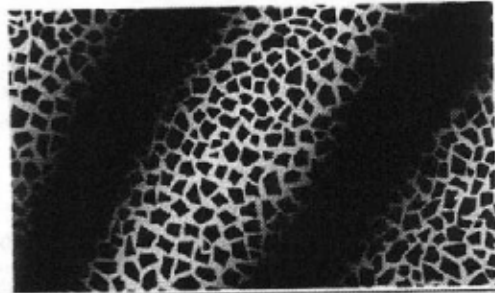


### HF 1000

Crushed tungsten carbide held in a nickel bronze matrix. The 3 mm grain size ensures greater concentration of carbide which is ideal for soft formation drilling.



*Section through hardfacing.*

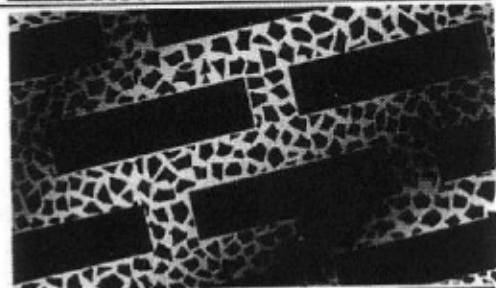


### HF 2000

Trapezoidal tungsten carbide inserts held in a sintered carbide nickel bronze matrix. This will give a greater depth of carbide coverage - ideal for high deviation drilling in abrasive formations.



*Section through hardfacing.*

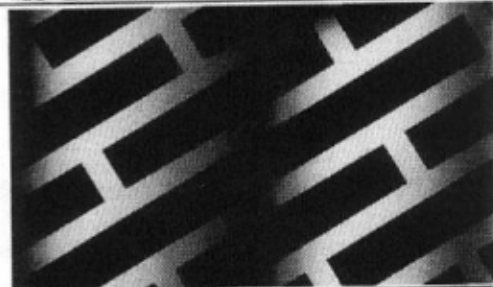


### HF 3000

Tungsten carbide inserts set in a powder spray deposit ideal for abrasive formations. 97% bonding guaranteed, certified by ultrasonic report. Recommended for non magnetic stabilisers.



*Section through hardfacing.*

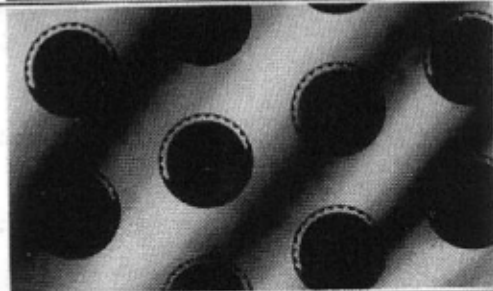


### HF 4000

Tungsten carbide inserts (button type). The inserts have been developed to allow cold insertion and maintain close fit. A greater concentration of inserts on the bottom third of the blade and leading edge will increase surface contact to reduce wear in highly abrasive formations.



*Section through hardfacing.*



### HF 5000

This oxy-acetylene process applies tough molten carbide particles of varying sizes held in a nickel chrome matrix which provides excellent bonding properties and greater surface wear characteristics are achieved.

Surface hardness levels over 40HRC. Ideal for GEO-THERMAL applications over 350°C.



*Section through hardfacing.*

